



# OSPREY PARK

# THE ASTORIA

3 Bedroom / 2 Bathroom / 1,894 Square Feet

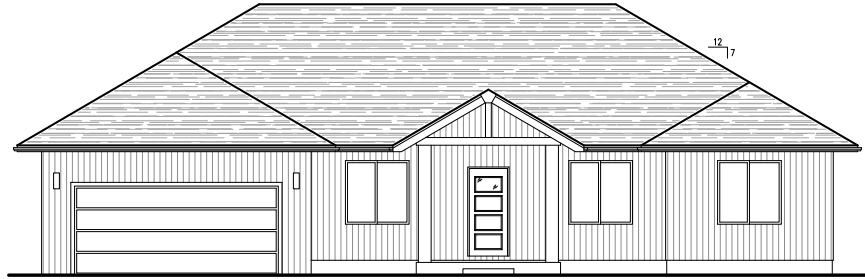
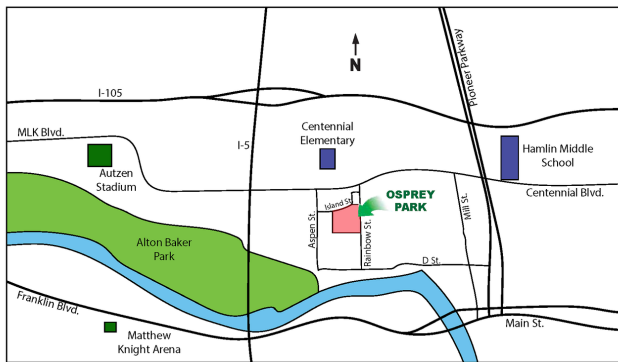
Osprey Park - Lot #6

Price Under Review

(Price and features subject to verification)

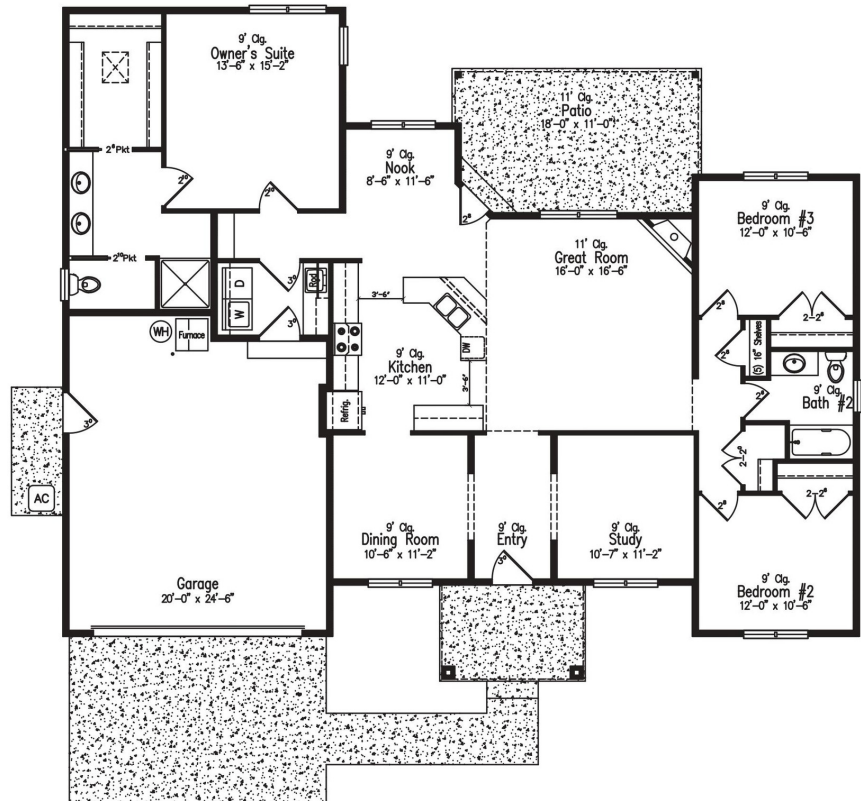
## Subdivision Features

- \* One and two-level homes from 1,500 to 3,000 square feet.
- \* Custom design by Anslow & DeGeneault, Inc.
- \* K-12 Schools - Centennial Elementary, Hamlin Middle, Springfield High.



## House Features

- \* Open floor plan great for entertaining.
- \* Large covered Front Porch and Rear Patio.
- \* Oversized two car Garage w/ opener & keypad.
- \* Wood floors in Entry, Great Room, Dining and Kitchen.
- \* Quartz solid surface countertops in Kitchen.
- \* Gas fireplace in Great Room.
- \* 10' ceiling in Great Room w/ transom windows.
- \* 4' x 4' shower w/ tile surround in Owner's Suite.
- \* Air conditioning included.
- \* Fully landscaped, fenced and sprinklered yard.



*Anslow & DeGeneault*

SIGNATURE HOMES  
1953 Garden Avenue, Eugene, Oregon 97403

Phone: 541-484-0070  
 Fax: 541-687-0646  
 CCB#: 49169  
 Email: [allen@adhomes.com](mailto:allen@adhomes.com)  
 Website: [www.adhomes.com](http://www.adhomes.com)  
[www.ospreypark.net](http://www.ospreypark.net)

