



THE CUMBERLAND

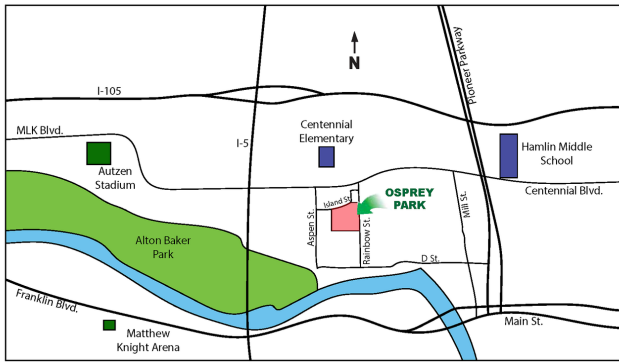
3 Bedroom / 2 Bathroom / Bonus Room / 2,137 Square Feet

Osprey Park - Lot #70 - 834 Salmonberry St.

Estimated Price \$598,900

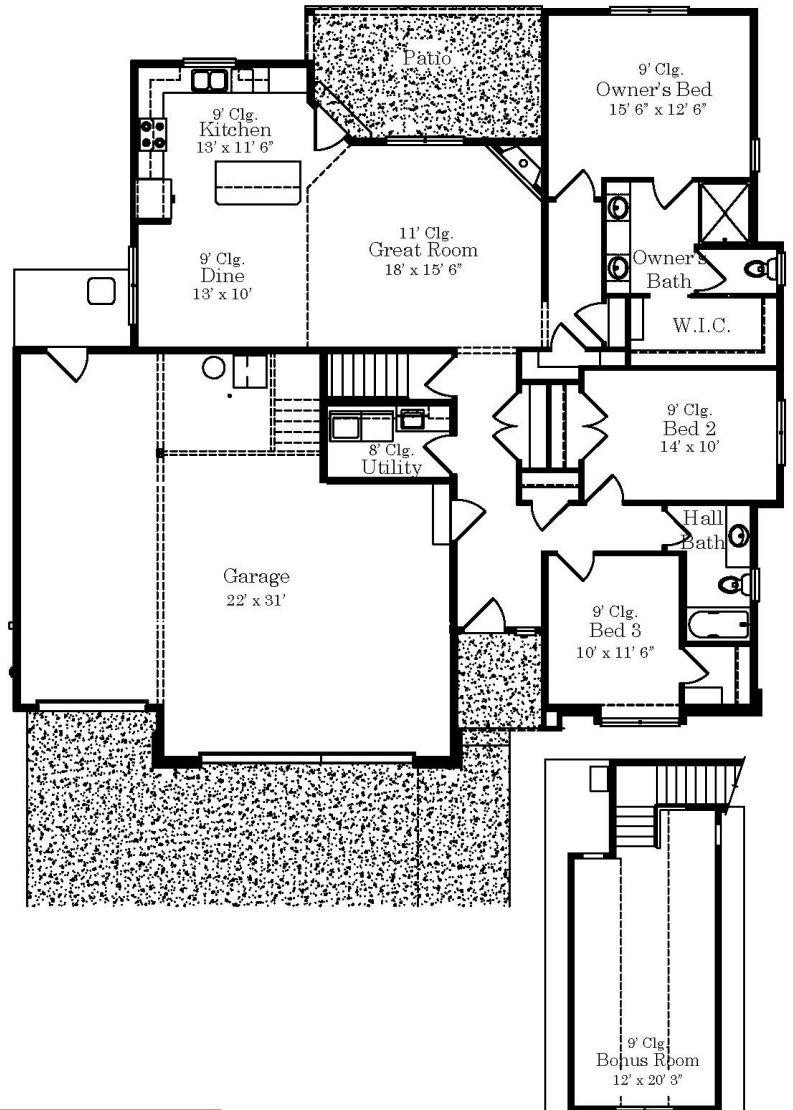
Subdivision Features

- * One and two- level homes from 1,500 to 3,000 square feet.
- * Custom design by Anslow & DeGeneault, Inc.
- * K-12 Schools - Centennial Elementary, Hamlin Middle, Springfield High.



House Features

- * Open floor plan great for entertaining.
- * Oversized 3-car Garage w/ opener and keypad.
- * Wood flooring in Entry, Great Room, Dining and Kitchen.
- * Quartz solid surface countertops in Kitchen.
- * Gas fireplace in Great Room.
- * 11' ceiling in Great Room
- * 340 Sq. Ft. Bonus Room over Garage on 2nd floor
- * 4' x 5' shower with cultured marble floor & surround in Owner's Suite
- * Air conditioning included.
- * Fully landscaped, fenced and sprinklered yard.



Anslow & DeGeneault
SIGNATURE HOMES
1953 Garden Avenue, Eugene, Oregon 97403

Phone: 541-484-0070
 Fax: 541-687-0646
 CCB#: 49169
 Email: allen@adhomes.com
 Website: www.adhomes.com
www.ospreypark.net