

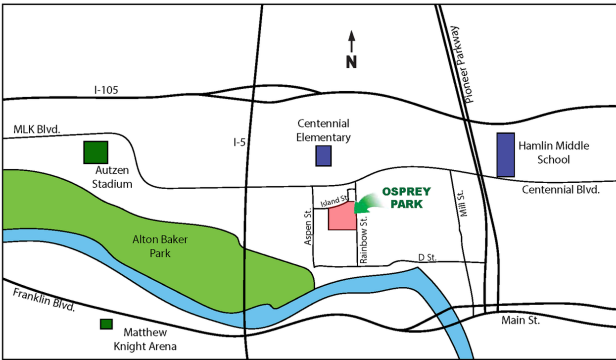
# The DOGWOOD

3 Bedroom / 2 Bathroom/ 1,848 Square Feet  
Osprey Park - Lot #6 - 1023 Island St.  
Estimated Price \$519,500

(Price and features subject to verification)

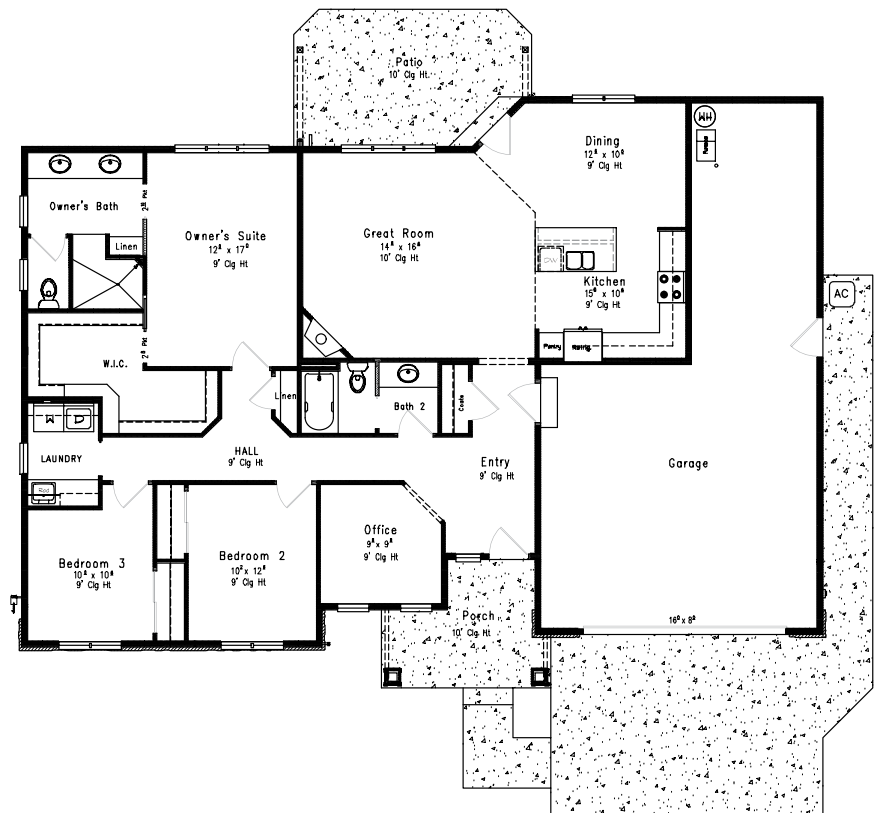
## Subdivision Features

- \* One and two- level homes from 1,500 to 3,000 square feet.
- \* Custom design by Anslow & DeGeneault, Inc.
- \* K-12 Schools - Centennial Elementary, Hamlin Middle, Springfield High.



## House Features

- \*Open floor plan great for entertaining.
- \*Large covered Front Porch and Rear Patio
- \*Oversized 3-car Garage w/ opener and keypad.
- \*Oak plank floors in Entry, Office, Great Room, Dining Room and Kitchen.
- \*Quartz solid surface countertops in Kitchen.
- \*Gas fireplace in Great Room.
- \*10' ceiling in Great Room
- \*Custom tiled roll-in shower in Owner's Suite
- \*Air conditioning included.
- \*Fully landscaped, fenced and sprinklered yard.
- \*Lots of storage.



EQUAL HOUSING  
OPPORTUNITY

*Anslow & DeGeneault*

SIGNATURE HOMES

1953 Garden Avenue, Eugene, Oregon 97403

Phone: 541-484-0070

Fax: 541-687-0646

CCB#: 49169

Email: [allen@adhomes.com](mailto:allen@adhomes.com)

Website: [www.adhomes.com](http://www.adhomes.com)

[www.ospreypark.net](http://www.ospreypark.net)

