

12-10-18



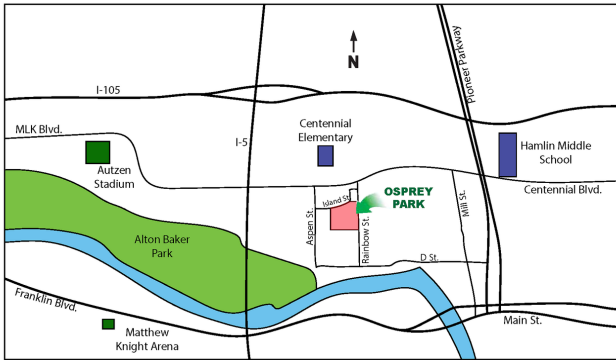
The DOGWOOD

3 Bedroom / 2 Bathroom/ 1,848 Square Feet
Osprey Park - Lot #6 - 1023 Island St.
Estimated Price \$479,600

(Price and features subject to verification)

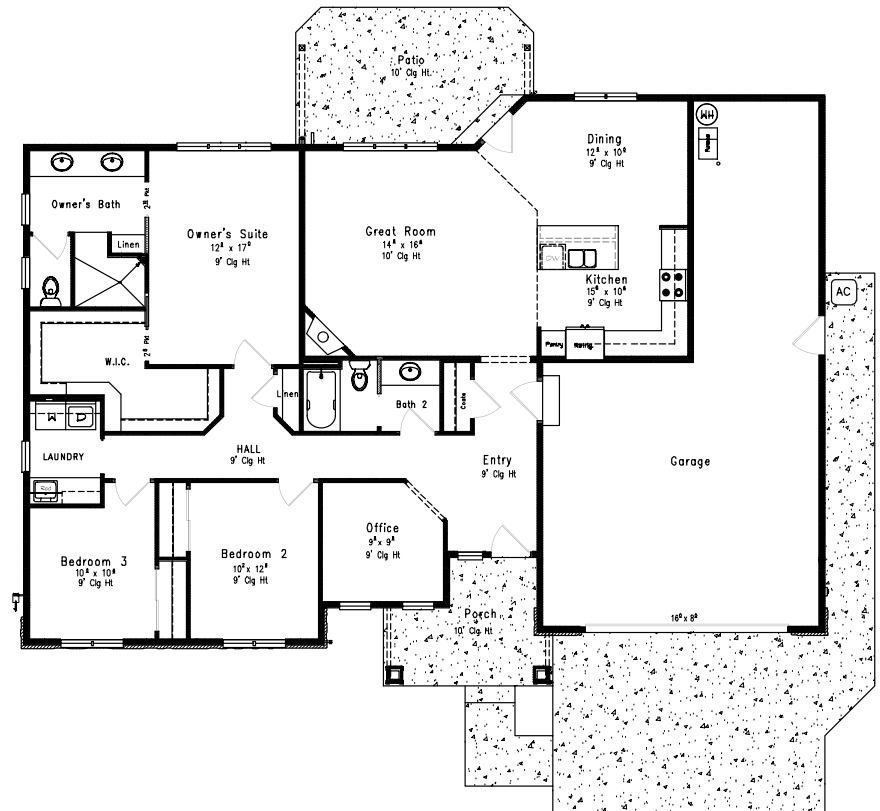
Subdivision Features

- * One and two- level homes from 1,500 to 3,000 square feet.
- * Custom design by Anslow & DeGeneault, Inc.
- * K-12 Schools - Centennial Elementary, Hamlin Middle, Springfield High.



House Features

- *Open floor plan great for entertaining.
- *Large covered Front Porch and Rear Patio
- *Oversized 3-car Garage w/ opener and keypad.
- *Oak plank floors in Entry, Office, Great Room, Dining Room and Kitchen.
- *Quartz solid surface countertops in Kitchen.
- *Gas fireplace in Great Room.
- *10' ceiling in Great Room
- *Custom tiled roll-in shower in Owner's Suite
- *Air conditioning included.
- *Fully landscaped, fenced and sprinklered yard.
- *Lots of storage.



Anslow & DeGeneault

SIGNATURE HOMES

1953 Garden Avenue, Eugene, Oregon 97403

Phone: 541-484-0070

Fax: 541-687-0646

CCB#: 49169

Email: allen@adhomes.com

Website: www.adhomes.com

www.ospreypark.net