



The DOGWOOD

3 Bedroom / 2 Bathroom/ 1,848 Square Feet

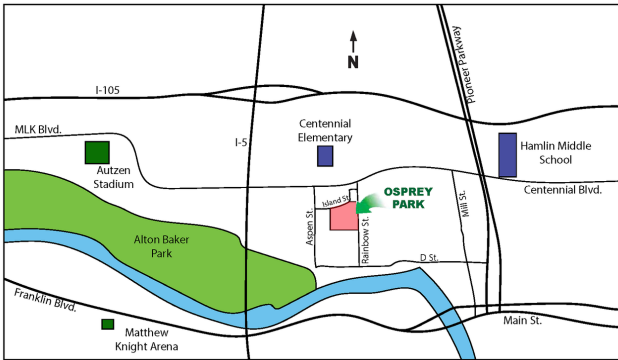
Osprey Park - Lot #18

Estimated Price \$445,000

(Price and features subject to verification)

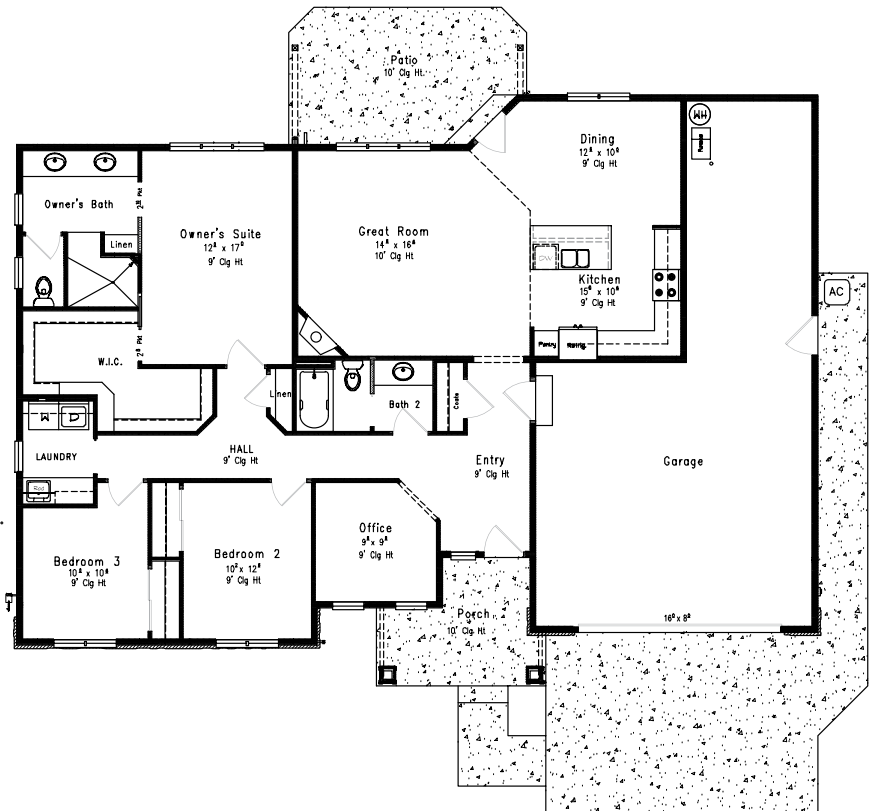
Subdivision Features

- * One and two-level homes from 1,500 to 3,000 square feet.
- * Custom design by Anslow & DeGeneault, Inc.
- * K-12 Schools - Centennial Elementary, Hamlin Middle, Springfield High.



House Features

- * Open floor plan great for entertaining.
- * Large covered Front Porch and Rear Patio
- * Oversized 3-car Garage w/ opener and keypad.
- * Oak plank floors in Entry, Office, Great Room, Dining Room and Kitchen.
- * Quartz solid surface countertops in Kitchen.
- * Gas fireplace in Great Room.
- * 10' ceiling in Great Room
- * Custom tiled roll-in shower in Owner's Suite
- * Air conditioning included.
- * Fully landscaped, fenced and sprinklered yard.
- * Lots of storage.



Anslow & DeGeneault

SIGNATURE HOMES

1953 Garden Avenue, Eugene, Oregon 97403

Phone: 541-484-0070

Fax: 541-687-0646

CCB#: 49169

Email: allen@adhomes.com

Website: www.adhomes.com

www.ospreypark.net

