



OSPREY PARK

THE JUNIPER II

3 Bedroom / 2 Bathroom / 1,640 Square Feet

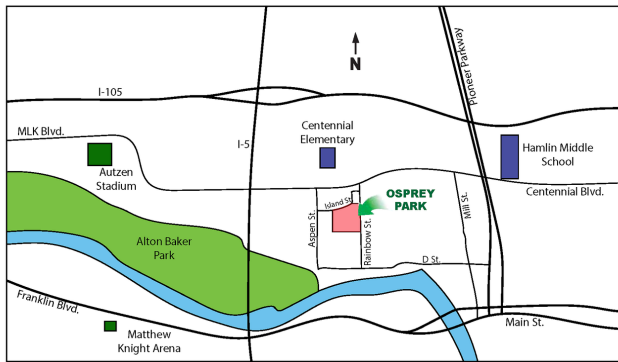
Osprey Park - Lot #TBD

Price Under Review

(Price and features subject to verification)

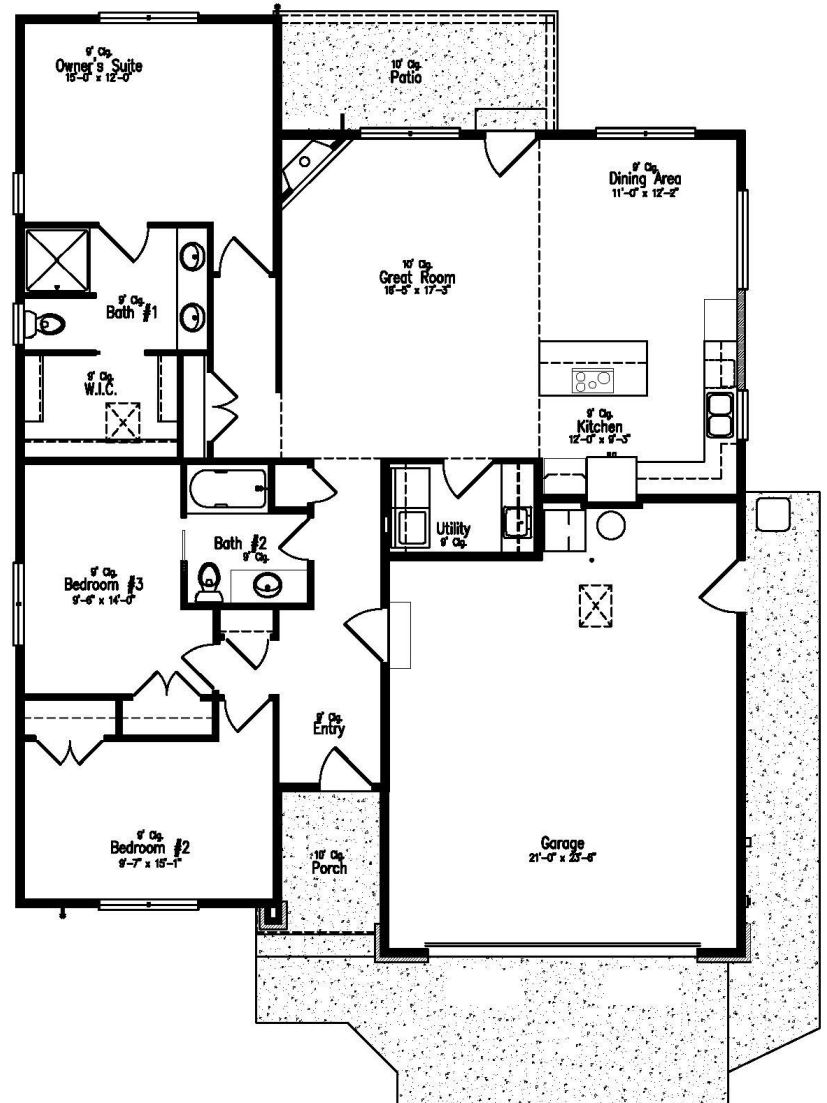
Subdivision Features

- * Convenient, Close-in, Located near major Shopping Areas
- * One and two- level homes from 1,400 to 3,000 square feet.
- * Custom design by Anslow & DeGeneault, Inc.
- * K-12 Schools - Centennial Elementary, Hamlin Middle, Springfield High.



House Features

- * Open floor plan.
- * Covered Front Porch and Rear Patio.
- * Oversized 2-car Garage w/ opener & keypad.
- * Plank floor in Entry, Great Room, Dining Room and Kitchen.
- * Solid surface countertops in Kitchen.
- * Gas fireplace.
- * Raised ceiling in Great Room.
- * 4' x 4' shower w/ tile surround in Owner's Suite.
- * Air conditioning.
- * Fully landscaped, fenced and sprinklered.



Anslow & DeGeneault

S I G N A T U R E H O M E S

1953 Garden Avenue, Eugene, Oregon 97403

Phone: 541-484-0070

Fax: 541-687-0646

CCB#: 49169

Email: allen@adhomes.com

Website: www.adhomes.com

www.ospreypark.net