

12-10-2018



THE KLAMATH III

3 Bedroom / 2 Bathroom/ 1,736 Square Feet

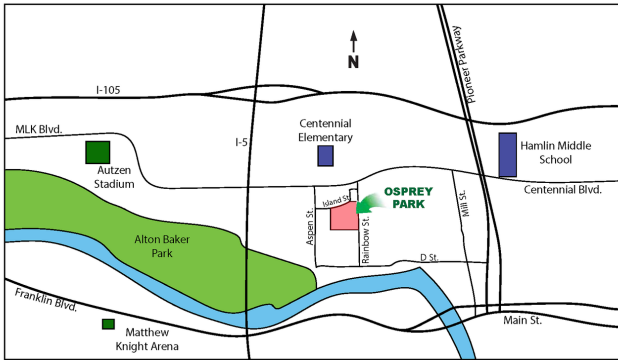
Osprey Park - Lot #41 - 948 Lupine St.

Estimated Price \$492,900

(Price and features subject to verification)

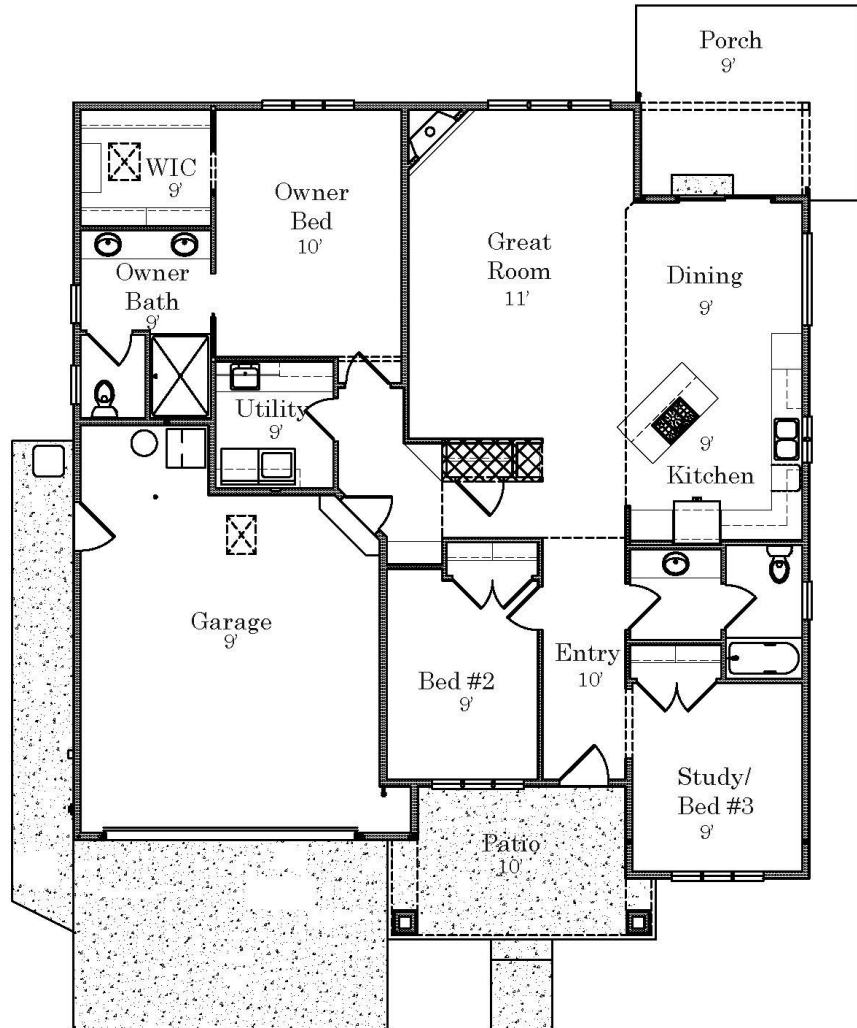
Subdivision Features

- * Convenient, close-in, located near major shopping areas.
- * One and two- level homes from 1,400 to 3,000 square feet.
- * Custom design by Anslow & DeGeneault, Inc.
- * K-12 Schools - Centennial Elementary, Hamlin Middle, Springfield High.



House Features

- * Open floor plan.
- * Covered Front Porch and Rear Patio
- * Oversized 2-car Garage w/opener, and keypad.
- * Plank floor in Entry, Great Room, Dining Room and Kitchen.
- * Solid surface countertops in Kitchen.
- * Gas fireplace
- * Raised ceiling in Great Room
- * 4' x 4' shower w/ cultured marble surround in Owner's Suite
- * Air conditioning
- * Fully landscaped, fenced and sprinklered yard.
- * Lots of storage.



Anslow & DeGeneault

SIGNATURE HOMES

1953 Garden Avenue, Eugene, Oregon 97403

Phone: 541-484-0070
 Fax: 541-687-0646
 CCB#: 49169

Email: allen@adhomes.com
 Website: www.adhomes.com
www.ospreypark.net