



# THE KLAMATH IV

3 Bedroom / 2 Bathroom/ 1,736 Square Feet

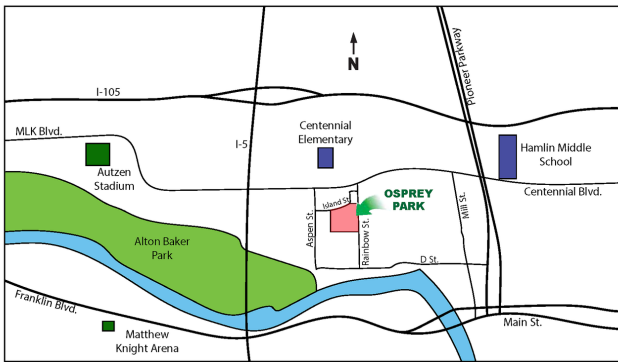
Osprey Park - Lot #46 - 1052 Lupine St.

Estimated Price \$508,500

(Price and features subject to verification)

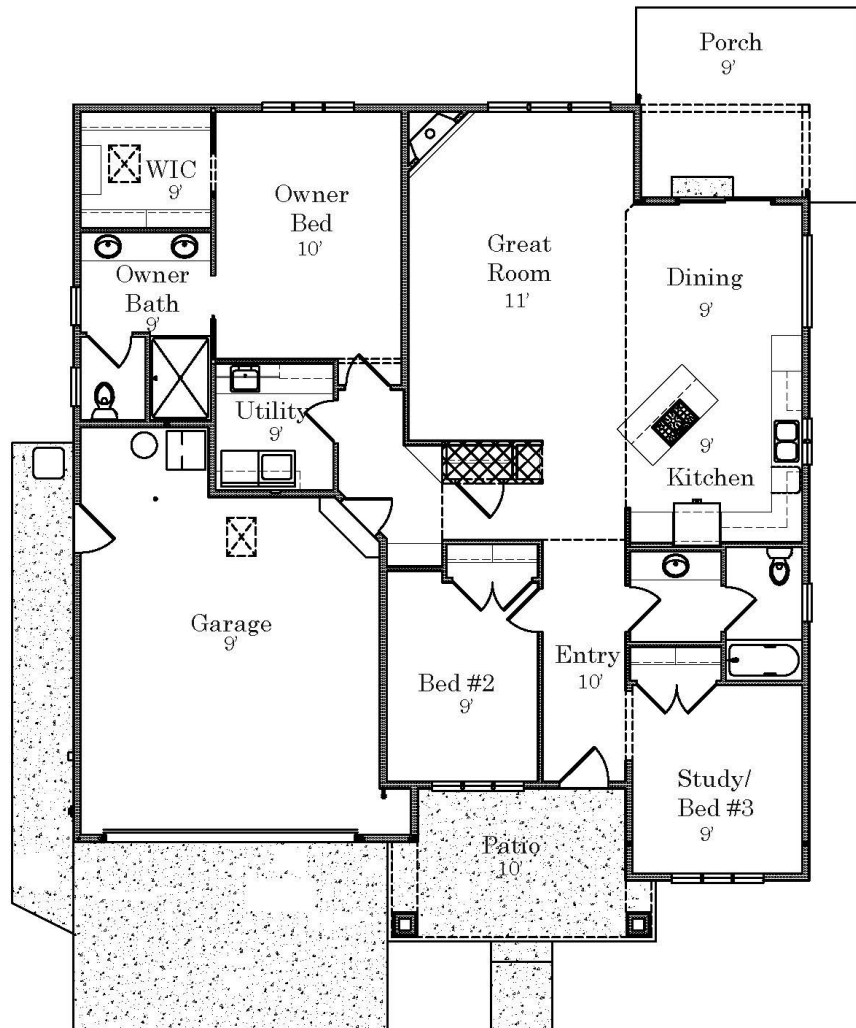
## Subdivision Features

- \* Convenient, close-in, located near major shopping areas.
- \* One and two-level homes from 1,400 to 3,000 square feet.
- \* Custom design by Anslow & DeGeneault, Inc.
- \* K-12 Schools - Centennial Elementary, Hamlin Middle, Springfield High.



## House Features

- \* Open floor plan.
- \* Covered Front Porch and Rear Patio
- \* Oversized 2-car Garage w/opener, and keypad.
- \* Plank floor in Entry, Great Room, Dining Room and Kitchen.
- \* Solid surface countertops in Kitchen.
- \* Gas fireplace
- \* Raised ceiling in Great Room
- \* 4' x 4' shower w/ cultured marble surround in Owner's Suite
- \* Air conditioning
- \* Fully landscaped, fenced and sprinklered yard.
- \* Lots of storage.



*Anslow & DeGeneault*

SIGNATURE HOMES

1953 Garden Avenue, Eugene, Oregon 97403

Phone: 541-484-0070

Fax: 541-687-0646

CCB#: 49169

Email: [allen@adhomes.com](mailto:allen@adhomes.com)

Website: [www.adhomes.com](http://www.adhomes.com)

[www.ospreypark.net](http://www.ospreypark.net)