



THE MCKENZIE

3 Bedroom / 2 Bathroom / 1.857 Square Feet

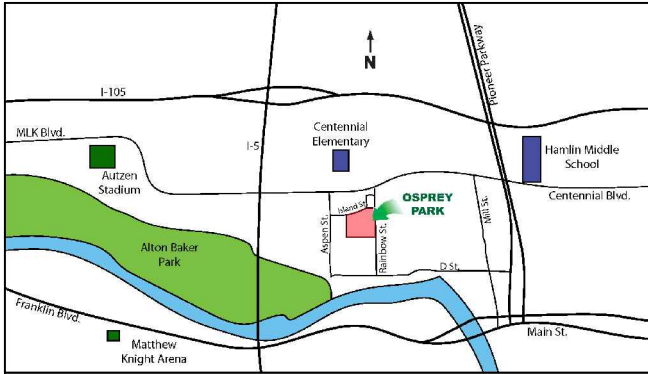
Osprey Park - Lot # 38

Estimated Price \$424,500

(Price and features subject to verification)

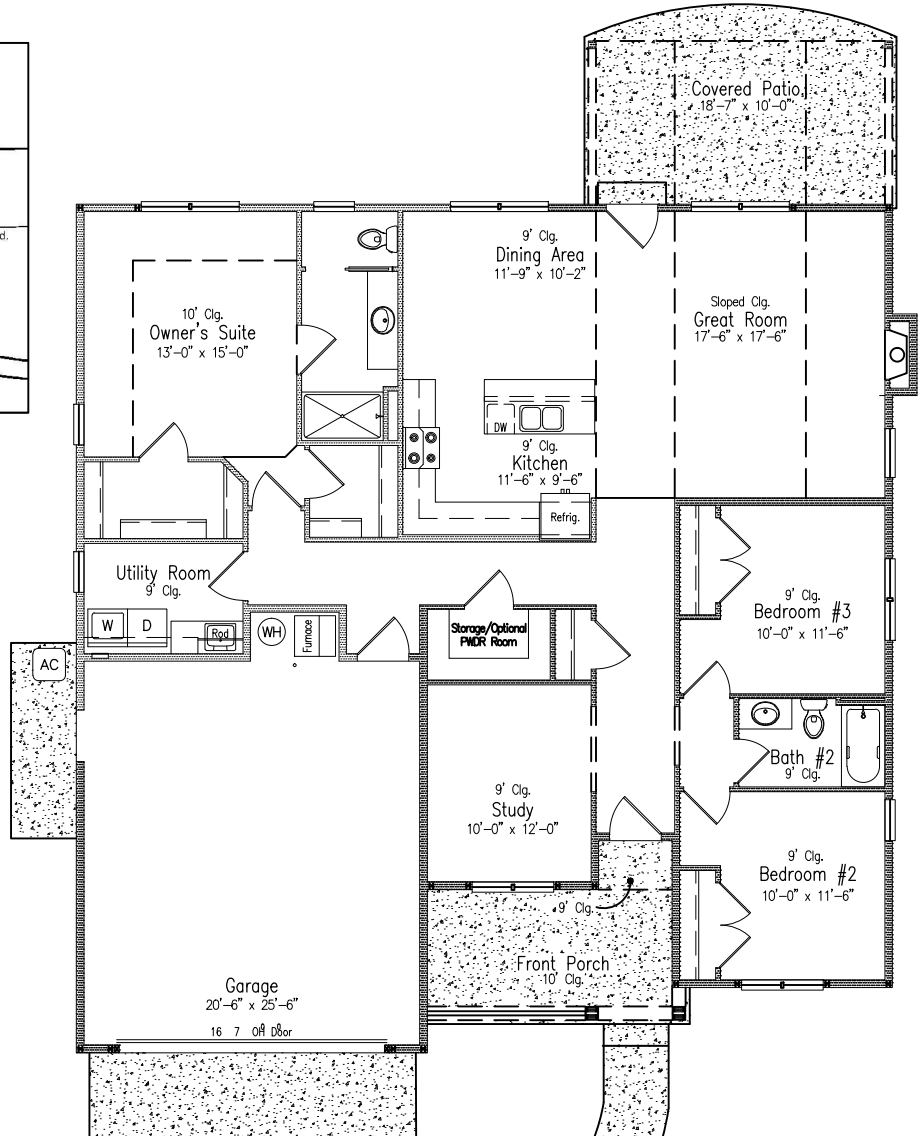
Subdivision Features

- * Homes starting in the mid \$300K's
- * One and Two - level homes from 1,500 to 3,000 square feet
- * Custom design by Anslow & DeGeneault, Inc.
- * K-12 Schools - Centennial Elementary, Hamlin Middle, Springfield High



House Features

- * Open floorplan great for entertaining
- * Large covered Front Porch and Rear Patio
- * Oversized 2-car Garage w/ opener and keypad.
- * Finish in place oak floors in Entry, Great Room & Kitchen
- * Quartz solid surface countertop in Kitchen
- * Gas Fireplace in Great Room
- * 11' ceiling in Great Room w/ transom windows
- * 10' ceiling in Entry & Owners Suite
- * 4' x 4' tile shower in Owner's Suite
- * Soaking tub with tile deck in Owner's Suite
- * Built-in Linen cabinets
- * Air conditioning included
- * Fully landscaped, fenced and sprinkled yard.
- * Lots of Storage.



CCB#: 49169
 E-mail: allen@adhomes.com
 Website: www.adhomes.com
 or: www.opreypark.net