

THE CRESCENT

3 Bedroom / 2 Bathroom/ 1,810 Square Feet

Osprey Park - Lot #TBA

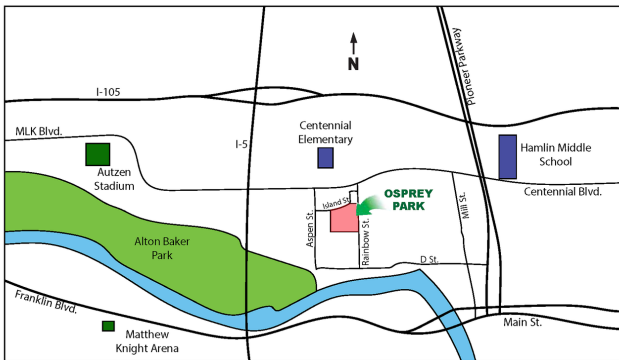
Price Under Review

(Price and features subject to verification)



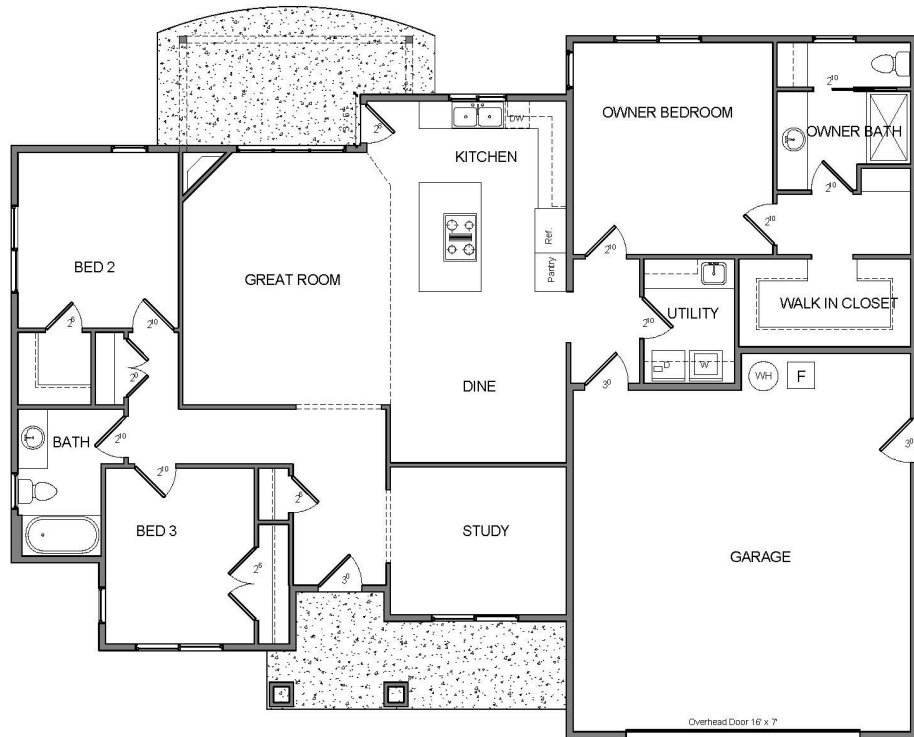
Subdivision Features

- * One and two-level homes from 1,500 to 3,000 square feet.
- * Custom design by Anslow & DeGeneault, Inc.
- * K-12 Schools - Centennial Elementary, Hamlin Middle, Springfield High.



House Features

- * Open floor plan great for entertaining.
- * Plank floors in Entry, Great Room, Dining and Kitchen.
- * Quartz solid surface countertops in Kitchen.
- * Tile counters in bathrooms.
- * Tile floor in Owner's bathroom with 4' x 5' cultured marble shower.
- * Gas fireplace in Great Room.
- * Air conditioning included.
- * Fully landscaped, fenced and sprinklered yard.
- * Oversized 2-car Garage w/storage, opener, and keypad.



Anslow & DeGeneault
SIGNATURE HOMES
1953 Garden Avenue, Eugene, Oregon 97403

Phone: 541-484-0070
 Fax: 541-687-0646
 CCB#: 49169
 Email: allen@adhomes.com
 Website: www.adhomes.com
www.ospreypark.net