



THE ASTORIA

3 Bedroom / 2 Bathroom / 1,894 Square Feet

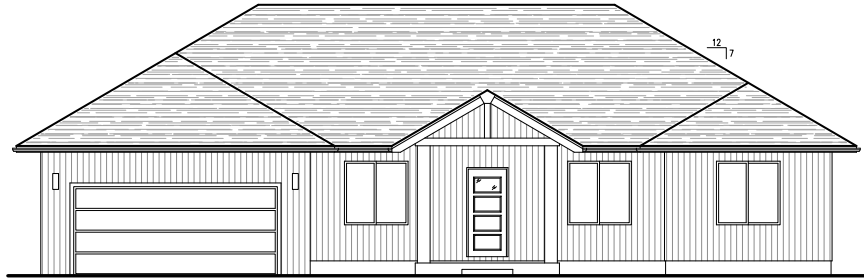
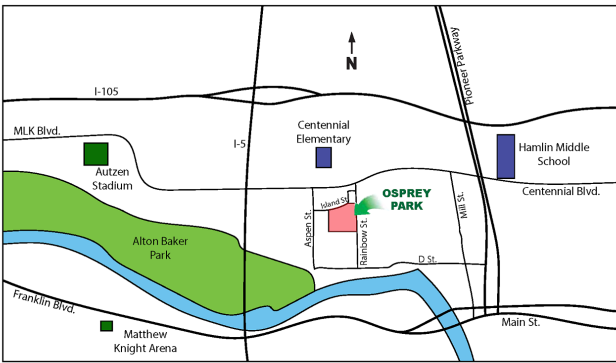
Osprey Park - Lot #5

Estimated Price \$407,500

(Price and features subject to verification)

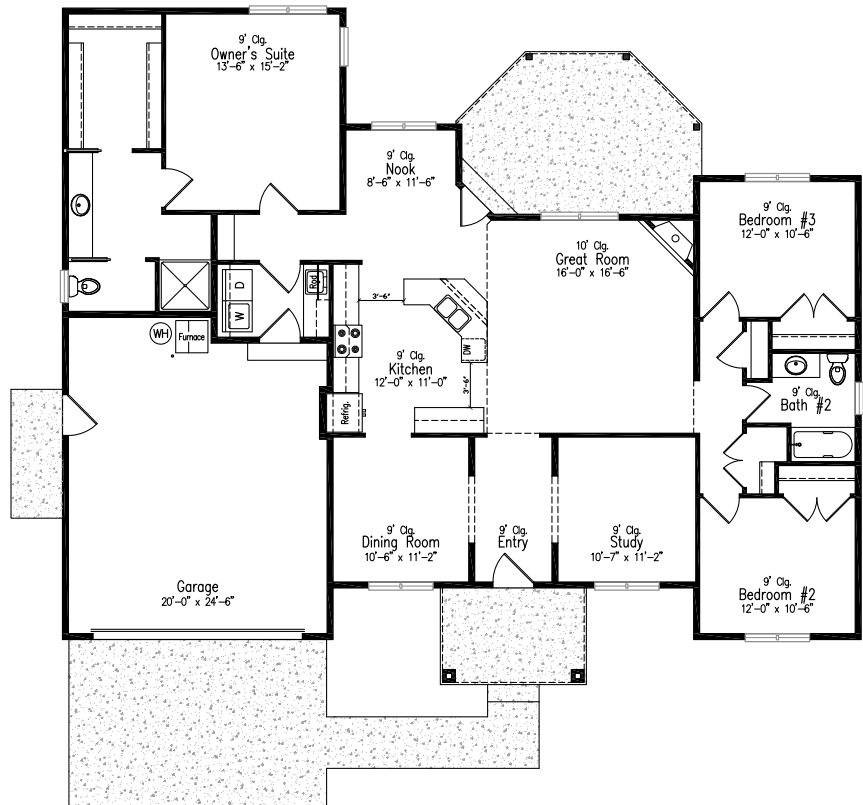
Subdivision Features

- * Homes starting in the mid 300K's
- * One and two- level homes from 1,500 to 3,000 square feet.
- * Custom design by Anslow & DeGeneault, Inc.
- * K-12 Schools - Centennial Elementary, Hamlin Middle, Springfield High.



House Features

- * Open floor plan great for entertaining.
- * Large covered Front Porch and Rear Patio.
- * Oversized two car Garage w/ opener & keypad.
- * Wood floors in Entry, Great Room, Dining and Kitchen.
- * Quartz solid surface countertops in Kitchen.
- * Gas fireplace in Great Room.
- * 11' ceiling in Great Room w/ transom windows.
- * 4' x 4' shower w/ tile surround in Owner's Suite.
- * Air conditioning included.
- * Fully landscaped, fenced and sprinklered yard.



Anslow & DeGeneault
SIGNATURE HOMES
1953 Garden Avenue, Eugene, Oregon 97403

Phone: 541-484-0070
Fax: 541-687-0646
CCB#: 49169
Email: allen@adhomes.com
Website: www.adhomes.com
www.ospreypark.net