

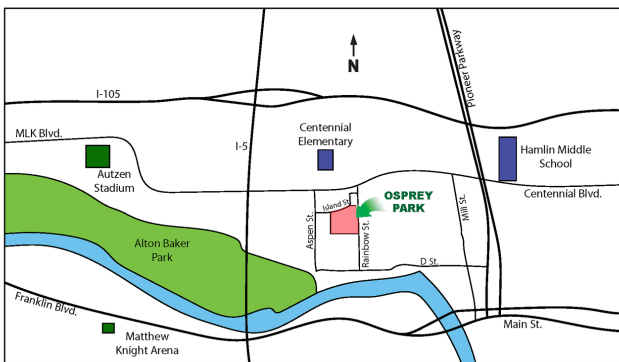
THE CLOVER CREEK



3 Bedroom / 2 Bathroom/ 1,707 Square Feet
 Osprey Park - Lot #2 - 1163 Island St.
Estimated Price \$451,900
 (Price and features subject to verification)

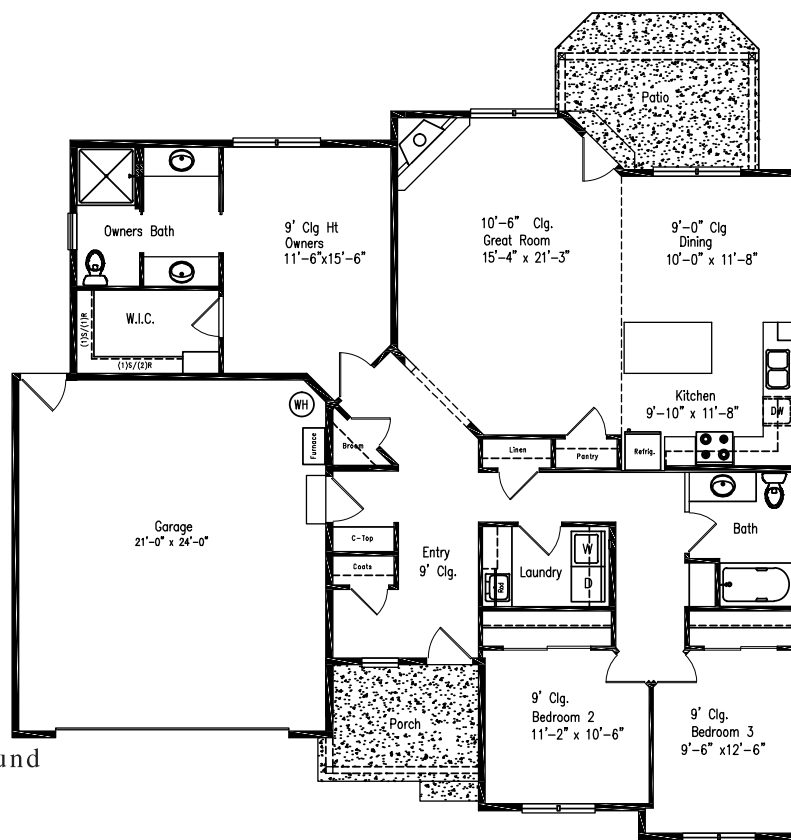
Subdivision Features

- * One and two- level homes from 1,500 to 3,000 square feet.
- * Custom design by Anslow & DeGeneault, Inc.
- * K-12 Schools - Centennial Elementary, Hamlin Middle, Springfield High.



House Features

- * Open floor plan great for entertaining.
- * Large covered Front Porch and Rear Patio
- * Oversized 2-car Garage w/ opener and keypad.
- * Wood floors in Entry, Great Room, Dining Room and Kitchen.
- * Quartz solid surface countertops in Kitchen.
- * Gas fireplace in Great Room.
- * 10' 6" ceiling in Great Room.
- * 4' x 4' shower with cultured marbled floor & surround in Owner's Suite
- * Air conditioning included.
- * Fully landscaped, fenced and sprinklered yard.
- * Lots of storage



Anslow & DeGeneault

SIGNATURE HOMES

1953 Garden Avenue, Eugene, Oregon 97403

Phone: 541-484-0070
 Fax: 541-687-0646
 CCB#: 49169
 Email: allen@adhomes.com
 Website: www.adhomes.com
www.ospreypark.net

