



OSPREY PARK

The North Umpqua

3 Bedrooms / 2 Bathrooms / 1,810 Square Feet

Osprey Park - Lot #48

Estimated Price \$518,800

(Price and features subject to verification)

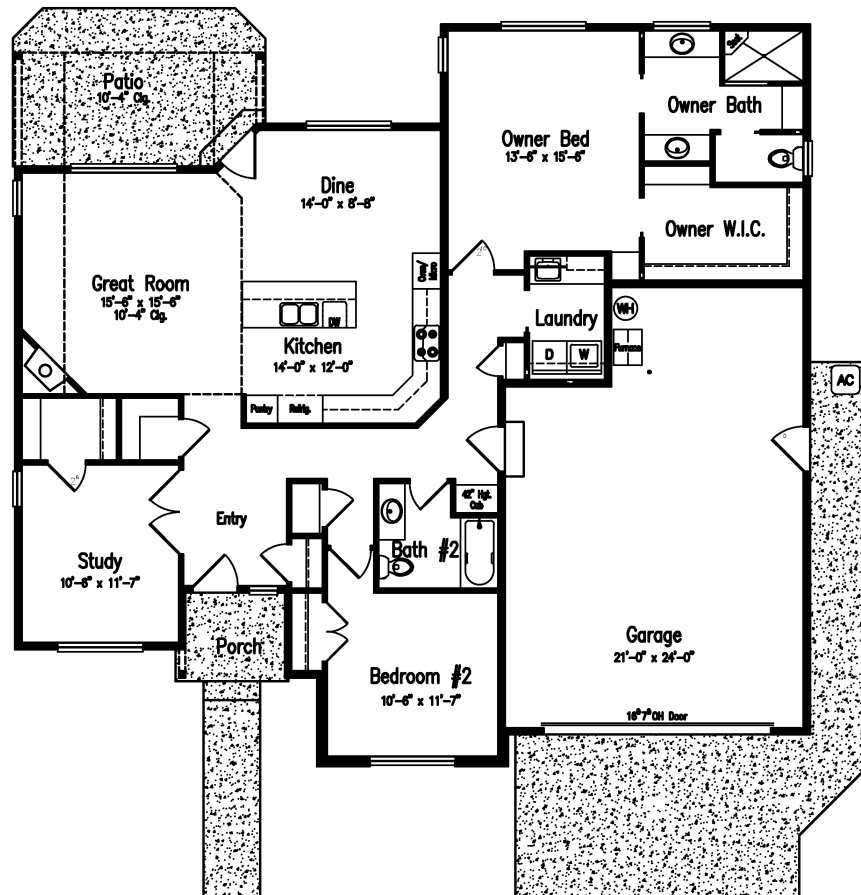
Subdivision Features

- * One and two-level homes from 1,500 to 3,000 square feet.
- * Custom design by Anslow & DeGeneault, Inc.
- * K-12 Schools - Centennial Elementary, Hamlin Middle, Springfield High.



House Features

- * Open floor plan great for entertaining.
- * Large covered Front Porch and Rear Patio.
- * Oversized two car Garage w/ opener & keypad.
- * Plank floors in Entry, Great Room, Dining and Kitchen.
- * Quartz solid surface countertops in Kitchen.
- * Gas fireplace in Great Room.
- * Vaulted ceiling in Great Room - 10' - 4".
- * 3' x 6' shower w/ tile surround in Owner's Suite.
- * Air conditioning included.
- * Fully landscaped, fenced and sprinklered yard.
- * Lots of Storage.



Anslow & DeGeneault

SIGNATURE HOMES
1953 Garden Avenue, Eugene, Oregon 97403

Phone: 541-484-0070
 Fax: 541-687-0646
 CCB#: 49169
 Email: allen@adhomes.com
 Website: www.adhomes.com
www.ospreypark.net