

# THE TUMALO

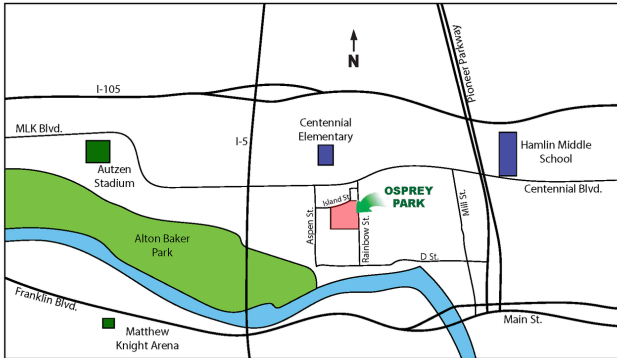
3 Bedroom / 2 Bathroom / 1,676 Square Feet  
Osprey Park - Lot #1

Estimated Price \$432,500

(Price and features subject to verification)

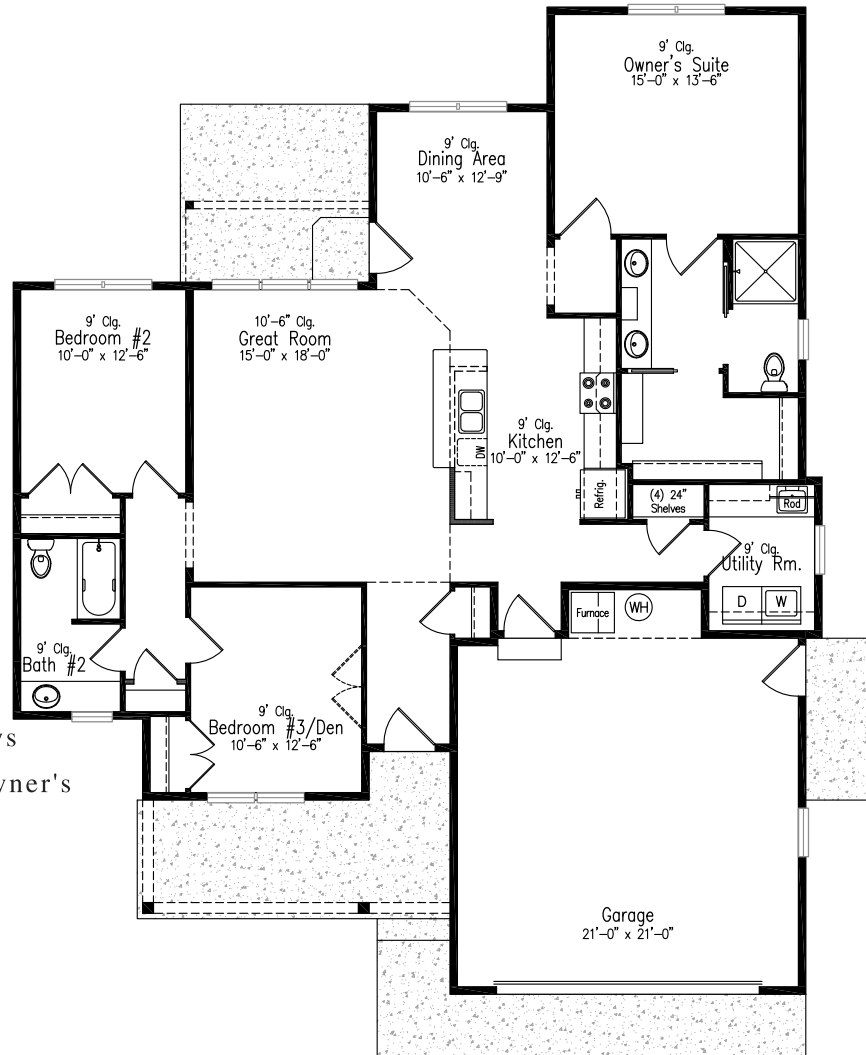
## Subdivision Features

- \* Convenient, close-in, located near major shopping areas.
- \* One and two-level homes from 1,400 to 3,000 square feet.
- \* Custom design by Anslow & DeGeneault, Inc.
- \* K-12 Schools - Centennial Elementary, Hamlin Middle, Springfield High.



## House Features

- \* Open floor plan.
- \* Covered Front Porch and Rear Patio
- \* 2-car Garage w/ opener and keypad.
- \* Plank flooring in Entry, Great Room, Dining and Kitchen.
- \* Quartz solid surface countertops in Kitchen.
- \* Raised ceiling in Great Room w/ transom windows
- \* 4' x 4' shower w/ cultured marble surround in Owner's Suite
- \* Air conditioning.
- \* Fully landscaped, fenced and sprinklered yard.
- \* Lots of storage.



*Anslow & DeGeneault*  
SIGNATURE HOMES  
1953 Garden Avenue, Eugene, Oregon 97403

Phone: 541-484-0070  
Fax: 541-687-0646  
CCB#: 49169  
Email: [allen@adhomes.com](mailto:allen@adhomes.com)  
Website: [www.adhomes.com](http://www.adhomes.com)  
[www.ospreypark.net](http://www.ospreypark.net)