

10-15-2018



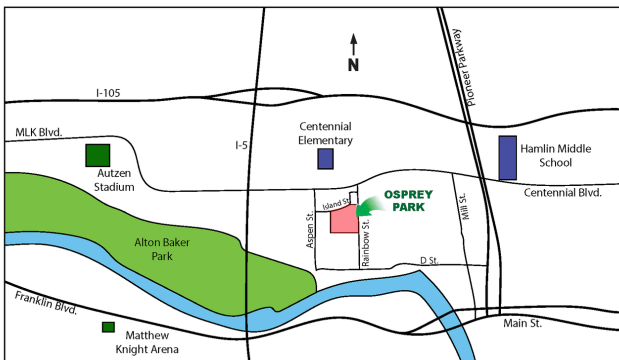
THE TUMALO

3 Bedroom / 2 Bathroom / 1,676 Square Feet
 Lot #1 Osprey Park - 1175 Island St.
 Estimated Price \$438,200

(Price and features subject to verification)

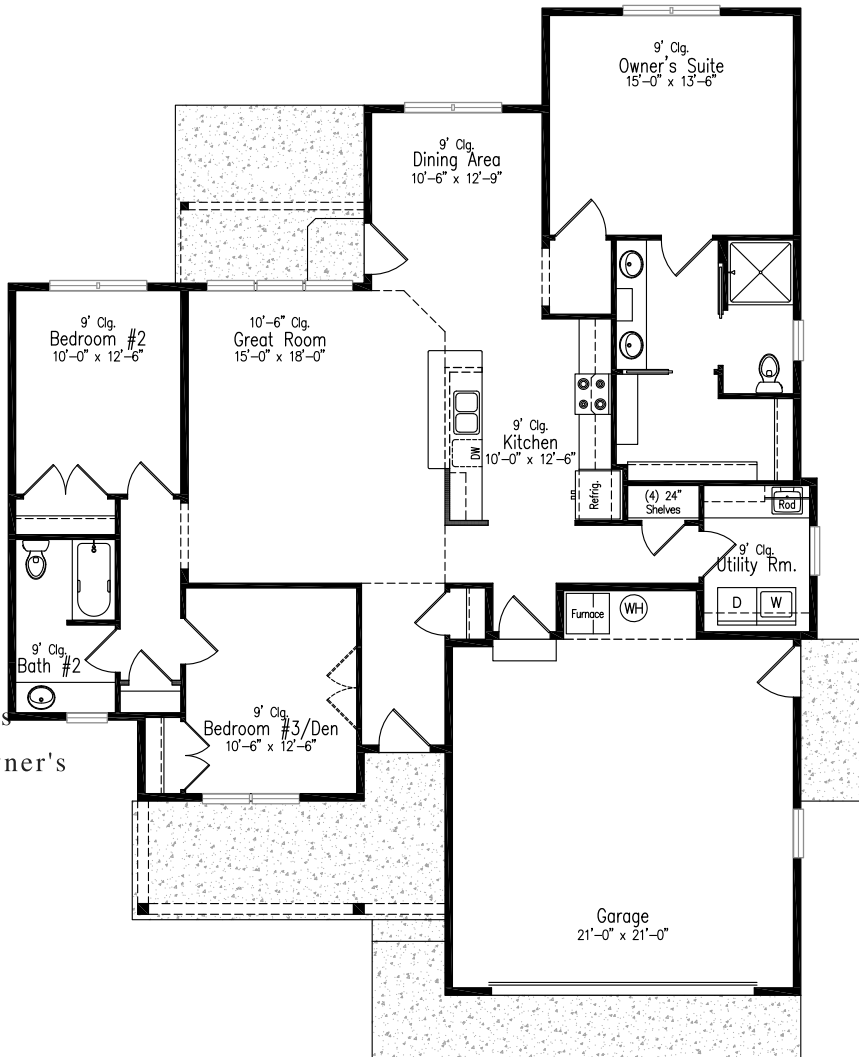
Subdivision Features

- * Convenient, close-in, located near major shopping areas.
- * One and two-level homes from 1,400 to 3,000 square feet.
- * Custom design by Anslow & DeGeneault, Inc.
- * K-12 Schools - Centennial Elementary, Hamlin Middle, Springfield High.



House Features

- * Open floor plan.
- * Covered Front Porch and Rear Patio
- * 2-car Garage w/ opener and keypad.
- * Plank flooring in Entry, Great Room, Dining and Kitchen.
- * Quartz solid surface countertops in Kitchen.
- * Raised ceiling in Great Room w/ transom windows
- * 4' x 4' shower w/ cultured marble surround in Owner's Suite
- * Air conditioning.
- * Fully landscaped, fenced and sprinklered yard.
- * Lots of storage.



Anslow & DeGeneault
 SIGNATURE HOMES
 1953 Garden Avenue, Eugene, Oregon 97403

Phone: 541-484-0070
 Fax: 541-687-0646
 CCB#: 49169
 Email: allen@adhomes.com
 Website: www.adhomes.com
www.ospreypark.net