

THE WALLOWA

3 Bedroom / 2.5 Bathroom/ 2,194 Square Feet

1st Flr: 1,329, 2nd Flr: 535 + 330 Bonus Rm

Osprey Park - Lot #25

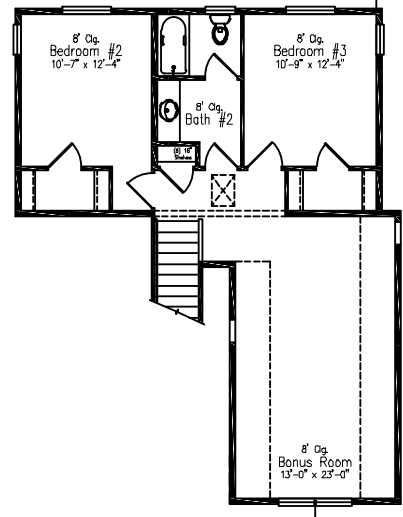
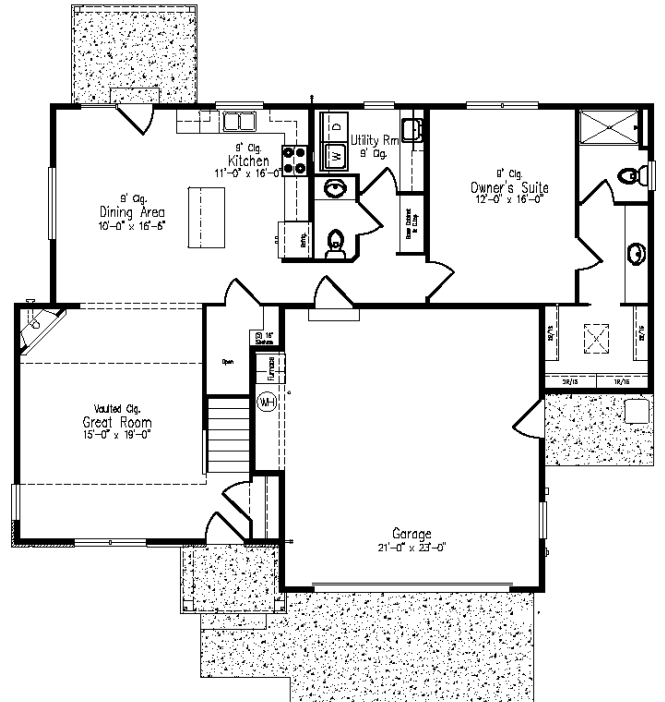
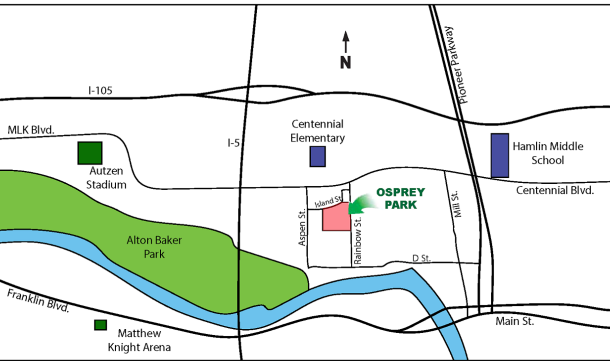
Estimated Price \$439,900

(Price and features subject to verification)



Subdivision Features

- * Homes starting in the mid 300K's
- * One and two- level homes from 1,500 to 3,000 square feet.
- * Custom design by Anslow & DeGeneault, Inc.
- * K-12 Schools - Centennial Elementary, Hamlin Middle, Springfield High.



House Features

- * Open floor plan great for entertaining.
- * Oversized 2-car Garage w/ opener and keypad.
- * Wood floors in Entry, Great Room, Dining and Kitchen.
- * Quartz solid surface countertops in Kitchen.
- * Gas fireplace in Great Room
- * Great Room ceiling vaulted to 12'
- * Owner's Suite down, all other bedrooms upstairs
- * 330 Sq. Ft. Bonus Room over Garage
- * 3' x 5' shower with tile surround in Owner's Suite
- * Air conditioning included.
- * Fully landscaped, fenced and sprinklered yard.

Anslow & DeGeneault

SIGNATURE HOMES
1953 Garden Avenue, Eugene, Oregon 97403

Phone: 541-484-0070
Fax: 541-687-0646
CCB#: 49169
Email: allen@adhomes.com
Website: www.adhomes.com
www.ospreypark.net

