



The SANDY

3 Bedrooms Plus Study / 2 Bathroom 2,004 Square Feet
Osprey Park - Lot #40 - 890 Lupine St.

Call for Pricing

(Price and features subject to verification)

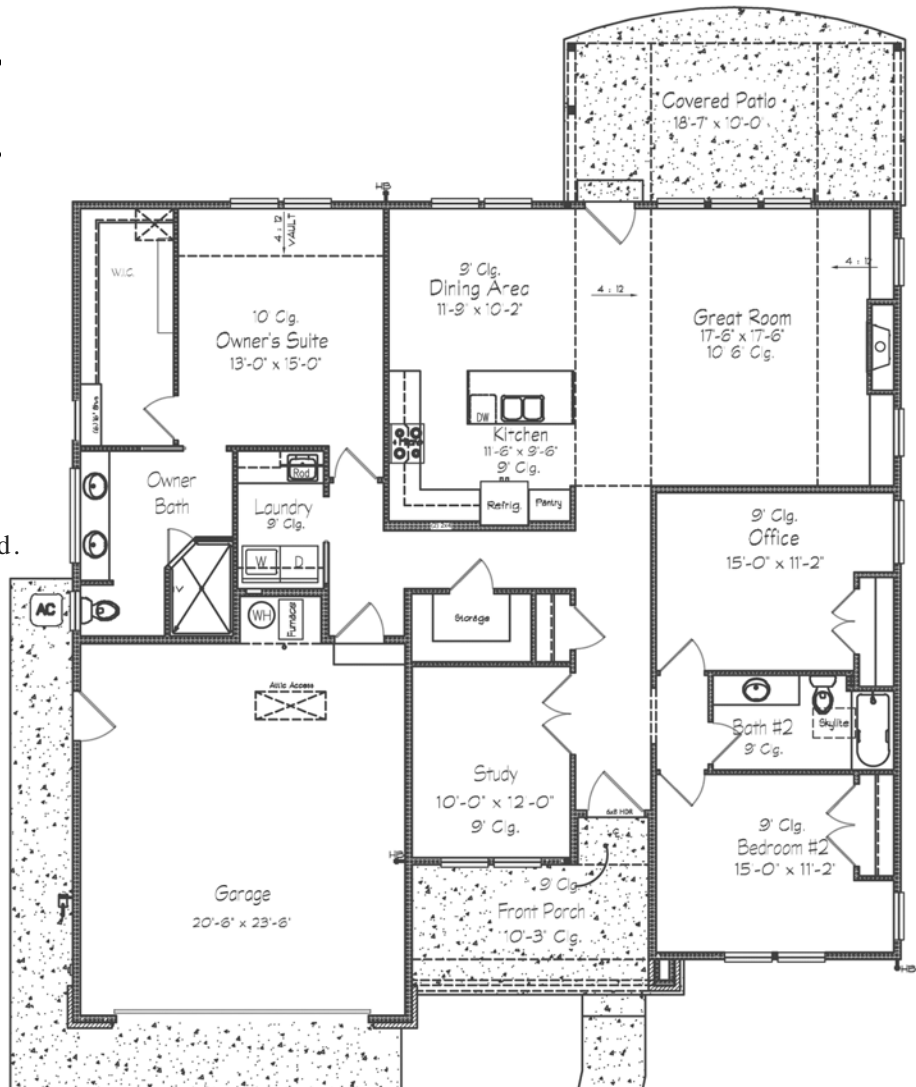
Subdivision Features

- * Convenient, Close-in, Located near major Shopping Areas.
- * One and two-level homes from 1,800 to 3,000 square feet.
- * Custom design by Anslow & DeGeneault, Inc.
- * K-12 Schools - Centennial Elementary, Hamlin Middle, Springfield High.



House Features

- * Covered Front Porch and Rear Patio
- * Oversized 2-car Garage w/ opener and keypad.
- * Luxury Vinyl Plank floors in Entry, Great Room, Study, Dining Room and Kitchen.
- * Quartz solid surface countertops in Kitchen.
- * Gas fireplace.
- * Raised and sloped ceiling in Great Room.
- * 4' x 5' shower in Owner's Suite.
- * Lots of storage.
- * Air conditioning.
- * Fully landscaped, fenced and sprinklered.



Anslow & DeGeneault
SIGNATURE HOMES
1953 Garden Avenue, Eugene, Oregon 97403

Phone: 541-484-0070
Fax: 541-687-0646
CCB#: 49169
Email: allen@adhomes.com
Website: www.adhomes.com