



# The SANDY

3 Bedrooms Plus Study / 2 Bathroom 2,004 Square Feet  
Osprey Park - Lot #40 - 890 Lupine St.

Estimated Price **\$TBA**

(Price and features subject to verification)

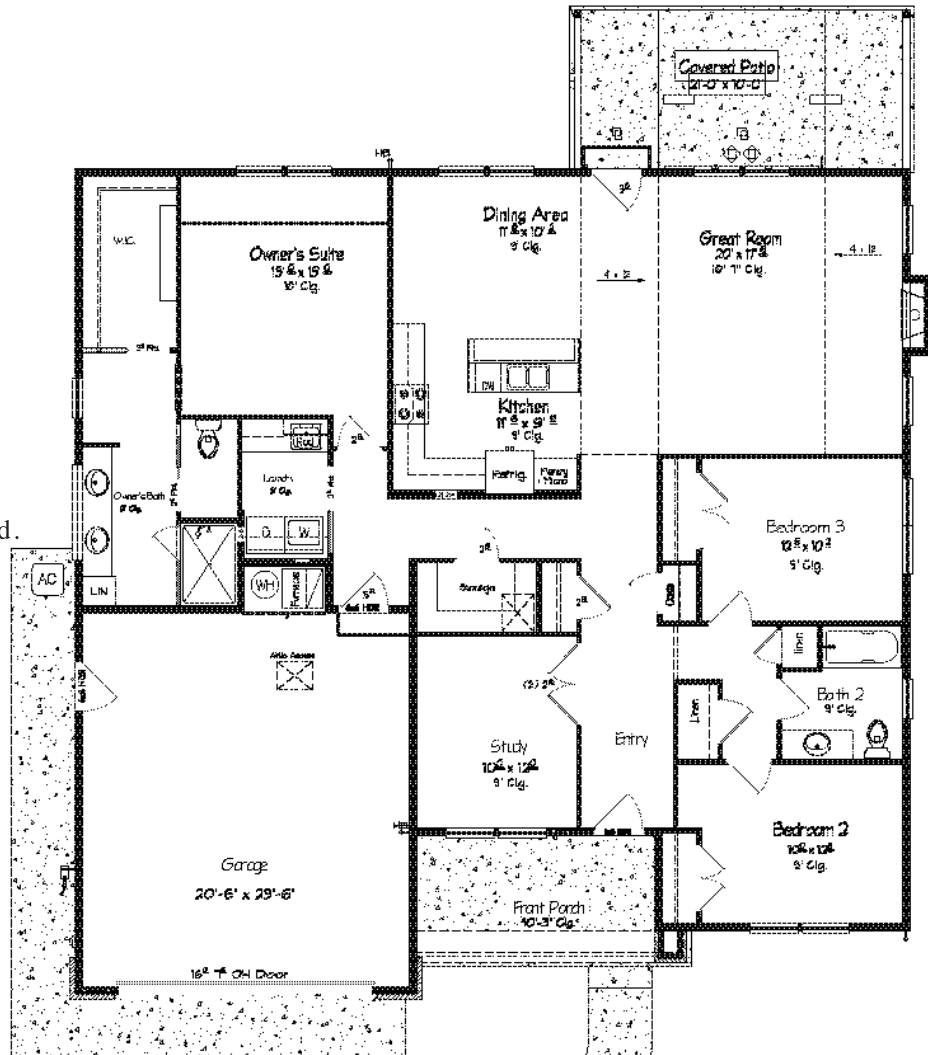
## Subdivision Features

- \* Convenient, Close-in, Located near major Shopping Areas.
- \* One and two- level homes from 1,400 to 3,000 square feet.
- \* Custom design by Anslow & DeGeneault, Inc.
- \* K-12 Schools - Centennial Elementary, Hamlin Middle, Springfield High.



## House Features

- \* Covered Front Porch and Rear Patio
- \* Oversized 2-car Garage w/ opener and keypad.
- \* Plank floors in Entry, Great Room, Study, Dining Room and Kitchen.
- \* Quartz solid surface countertops in Kitchen.
- \* Gas fireplace.
- \* Raised and sloped ceiling in Great Room.
- \* 4' x 5' shower in Owner's Suite.
- \* Lots of storage.
- \* Air conditioning.
- \* Fully landscaped, fenced and sprinklered.



*Anslow & DeGeneault*

SIGNATURE HOMES  
1953 Garden Avenue, Eugene, Oregon 97403

Phone: 541-484-0070

Fax: 541-687-0646

CCB#: 49169

Email: allen@adhomes.com

Website: www.adhomes.com