



The Avocet

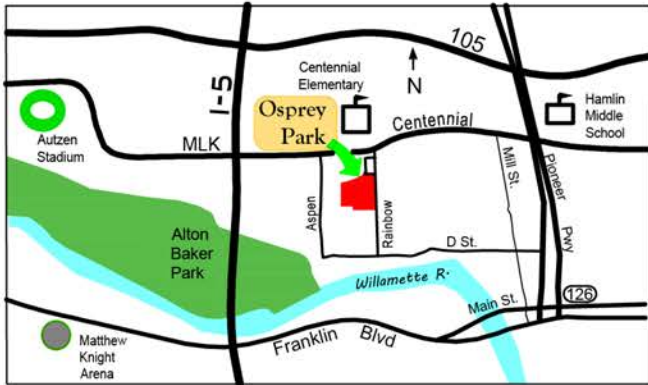
3 Bedroom / 2.5 Baths & Office/ 2098 Square Feet
Osprey Park - Lot #70 - 830 Salmonberry St.

\$795,500

(Price and features subject to verification)

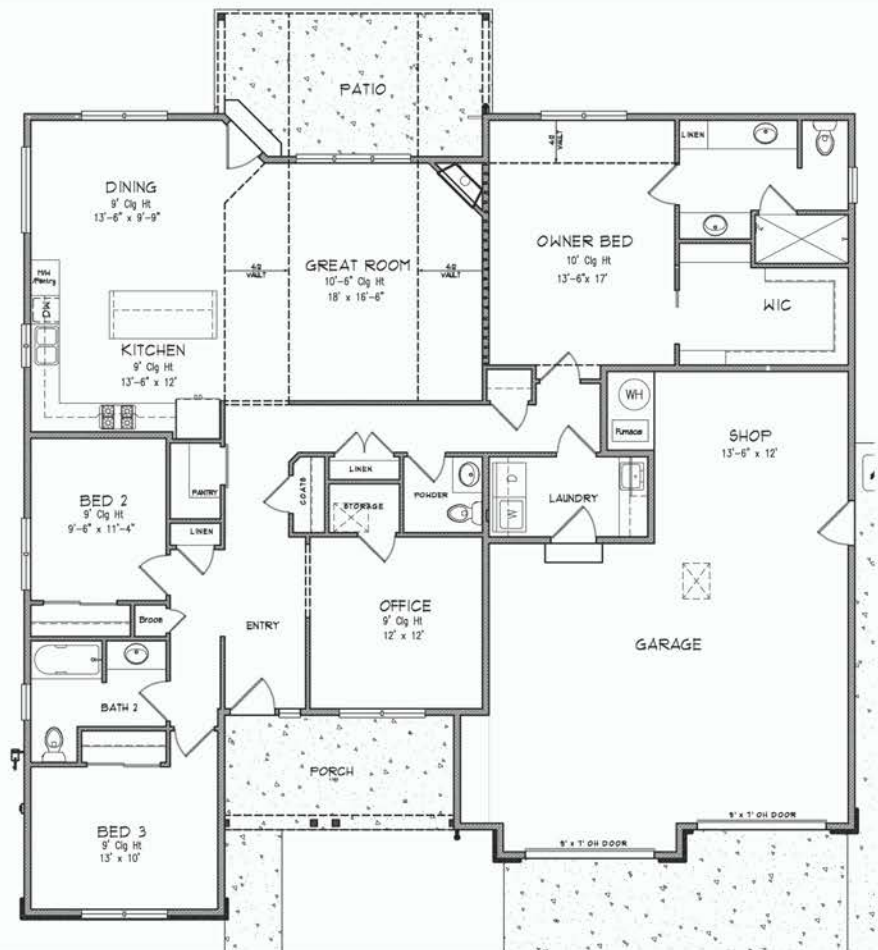
Subdivision Features

- * Convenient, close-in, located near major shopping areas.
- * One and two-level homes from 1,800 to 3,000 square feet.
- * Custom design by Anslow & DeGeneault, Inc.
- * K-12 Schools - Centennial Elementary, Hamlin Middle, Springfield High.



House Features

- * Open floor plan.
- * Covered Front Porch and Rear Patio
- * Over-sized 2-car Garage w/opener, and keypad.
- * Luxury Vinyl Plank flooring in Entry, Great Room, Dining Room and Kitchen.
- * Solid surface countertops in Kitchen.
- * Gas fireplace
- * Raised ceiling in Great Room
- * 6' x 3'-6" shower w/ cultured marble surround in Owner's Suite
- * Air conditioning
- * Fully landscaped, fenced and sprinklered yard.
- * Lots of storage.



EQUAL HOUSING
OPPORTUNITY



Home Builders
ASSOCIATION
of Lane County

Anslow & DeGeneault

SIGNATURE HOMES
1953 Garden Avenue, Eugene, Oregon 97403

Phone: 541-484-0070

Fax: 541-687-0646

CCB#: 49169

Email: allen@adhomes.com

Website: www.adhomes.com