



The Clearwater

3 Bedrooms Plus Office / 2 Bathroom 2,008 Square Feet
Osprey Park - Lot #63 - 843 Salmonberry St.

Estimated Price **\$TBA**

(Price and features subject to verification)

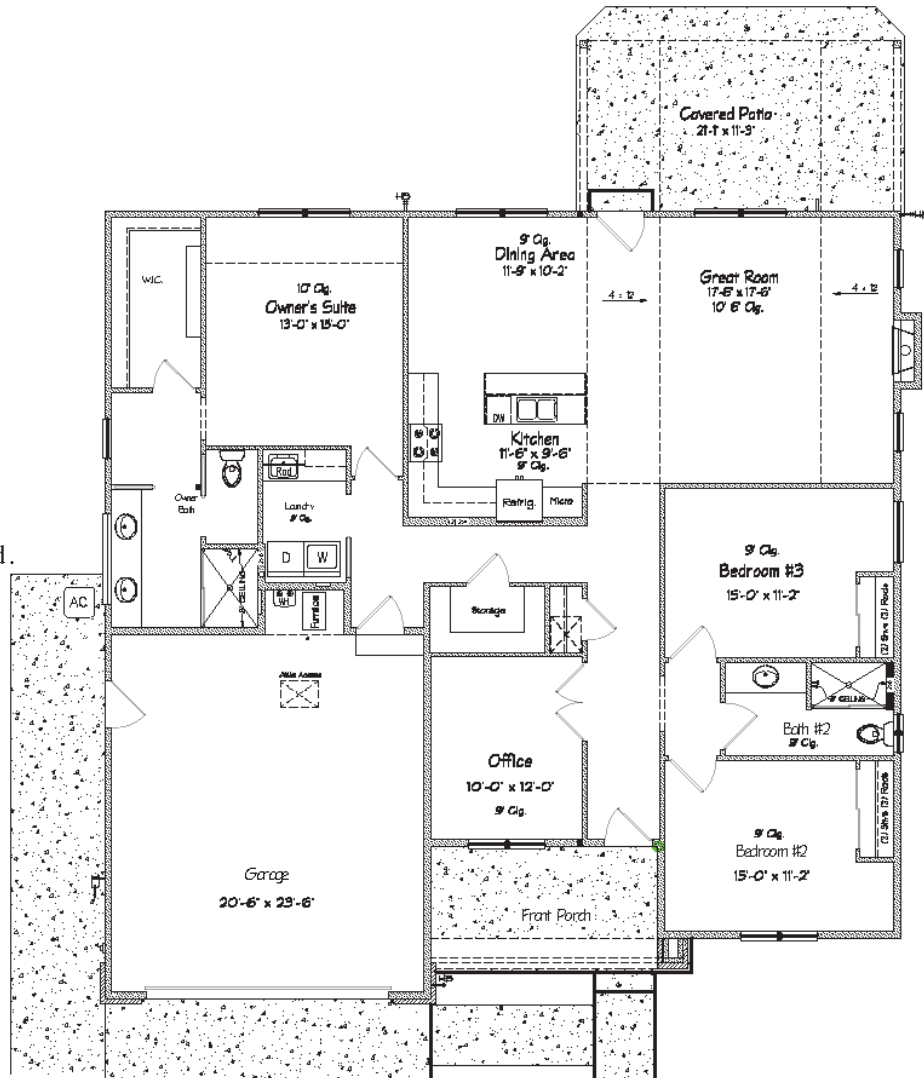
Subdivision Features

- * Convenient, Close-in, Located near major Shopping Areas.
- * One and two-level homes from 1,400 to 3,000 square feet.
- * Custom design by Anslow & DeGeneault, Inc.
- * K-12 Schools - Centennial Elementary, Hamlin Middle, Springfield High.



House Features

- * Covered Front Porch and Large Rear Patio
- * Oversized 2-car Garage w/ opener and keypad.
- * Plank floors in Entry, Great Room, Study, Dining Room and Kitchen.
- * Quartz solid surface countertops in Kitchen.
- * Gas fireplace.
- * Raised and sloped ceiling in Great Room.
- * 4' x 5' shower in Owner's Suite.
- * Lots of storage.
- * Air conditioning.
- * Fully landscaped, fenced and sprinklered.



Anslow & DeGeneault

SIGNATURE HOMES
1953 Garden Avenue, Eugene, Oregon 97403

Phone: 541-484-0070

Fax: 541-687-0646

CCB#: 49169

Email: allen@adhomes.com

Website: www.adhomes.com